

# HDOW

## Attenuated Oscillatory Wave Immunity



## Overview

HDOW series instruments can provide attenuated oscillation wave (fast & slow), damped oscillation magnetic field immunity test. HDOW series can generate a ringing frequency 100kHz to 30MHz attenuated sine waveform, built-in three-phase CDN, external 1m x 1m magnetic field coil to achieve magnetic field testing.

The product adopts ergonomic design, 7-inch touch screen, easy operation and beautiful appearance. Original German imported high-speed and high reliability electronic switch to ensure safe and accurate operation in any state, reaching international advanced and domestic leading level. High reliability to ensure safe and accurate operation in any state, reaching international advanced and domestic leading level.



HDOW



1m×1m magnetic field coil

## Features

- 7-inch touch color screen, simple and elegant UI, easy to operate
- Automatic detection of peak voltage and peak current during oscillatory wave testing
- Power line coupled CDN (single-phase 16A / three-phase 16A & 32A)
- Slow damped oscillatory wave: 3.3kV (100kHz / 1MHz)
- Fast damped oscillatory wave: 4.0kV (1MHz / 10MHz / 30MHz)
- 1m×1m magnetic field coil: maximum 100A/m

## Applications

- IEC 61000-4-18, GB/T 17626.18
- IEC 61000-4-10, GB/T 17626.10
- IEC 60255-22-1
- IEC 60255-5
- ANSI / IEEE C37.90
- ANSI / IEEE C62.41
- GB/T 14598.13
- UL 1741

# HDOW Attenuated Oscillatory Wave Immunity



## Attenuated oscillation wave Host HDOW

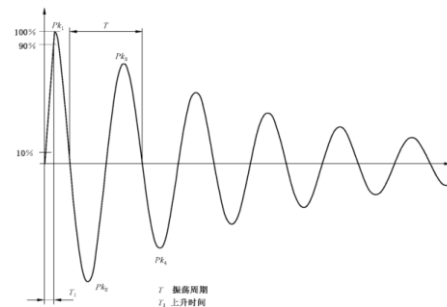
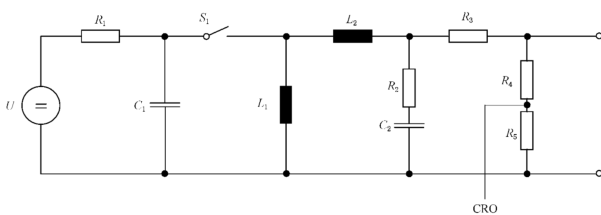
### slow oscillatory wave

Output Voltage	0.25kV - 3.3kV±10%	Oscillation Frequency	100kHz / 1MHz ±10%
Polarity	Positive/Negative/Alternate Positive and Negative	Repetition Rate	40Hz / 400Hz
Output Impedance	200Ω 1.25A - 16.5A (short circuit current)	Rise Time	75ns±20%
Attenuated Rate	peak 5>50% of peak 1 peak 10<50% of peak 1	Duration	≥2s
Field Coil	10A/m - 100A/m	Coupling/Decoupling Network	Built-in Max: AC440V 16A/32A

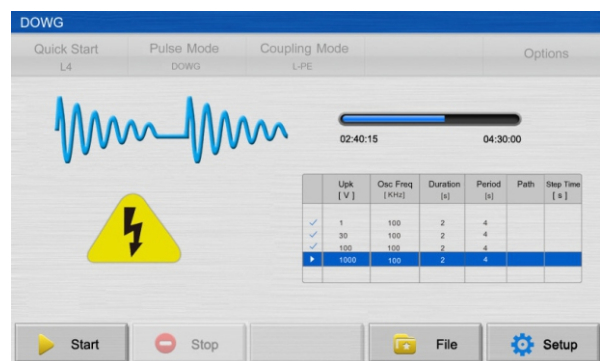
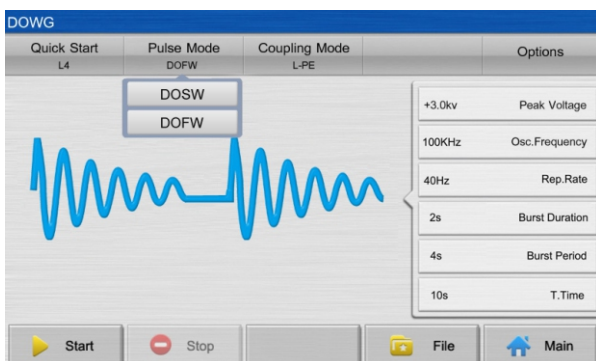
### Fast oscillatory wave

Output Voltage	0.25kV - 4.0kV±10%	Oscillation Frequency	3MHz /10MHz/30MHz ±10%
Polarity	Positive/Negative/Alternate Positive and Negative	Repetition Rate	5000/s ( ± 10%) Range: (40 – 5000Hz)
Output Impedance	50 Ω	Rise Time	5ns±30%
Trigger Cycle	300ms	Attenuated rate	Peak 5 >50% of peak 1 Peak 10 < 50% of peak 1
Trigger Duration	3MHz:50ms(1±20%) 10MHz:15ms(1±20%) 30MHz:5ms(1±20%) Range : (1ms – 50ms)	Current rise time	3MHz:<330ns 10MHz:<100ns 30MHz:<33ns
The Peak	Peak 10 < 25% of peak 1	Test duration	1-9999s
Size	482mmX556mmX365.5mm	Coupling/decoupling network	Built-in Max: AC440V 16A/32A

## Schematic diagram of decaying oscillatory wave



## Software running interface



订货编码	名称	规格型号	说明
41070100	Slow Attenuated Oscillatory Wave Generator	HDOV-S16	DOW:±3.3kV, 3P/16A, IEC 61000-4-18
41070200	Slow Attenuated Oscillatory Wave Generator	HDOV-S30	DOW:±3.3kV, 3P/32A, IEC 61000-4-18
41070300	Fast Attenuated Oscillatory Wave Module	Options_F	Attenuated oscillatory wave fast module option, need to be used with the host
41080620	Unshielded unbalanced line coupling decoupling network	HCDN-DO4	The maximum number of coupling lines is 4, in line with IEC 61000-4-18 ED2.0 Figure 12
41080630	Unshielded communication line coupling decoupling network	HCDN-DO8S	The maximum number of coupling lines is 8, in line with IEC 61000-4-18 ED2.0 Figure 13
41050140	Damped oscillatory magnetic field	HHS 100	Magnetic field strength:100A; coil size: 1m×1m; need to be used with the host
41080640	Capacitive coupling clamp	H3C-DO	Diameter 40mm, in line with IEC 61000-4-18 ED2.0

## The leader of EMC Test and Measurement



Address : Fuhai • Bao'an • Shenzhen

Tel : +86 755-27210748

E-mail : office@htec-emc.com

Website: www.htec-emc.com

